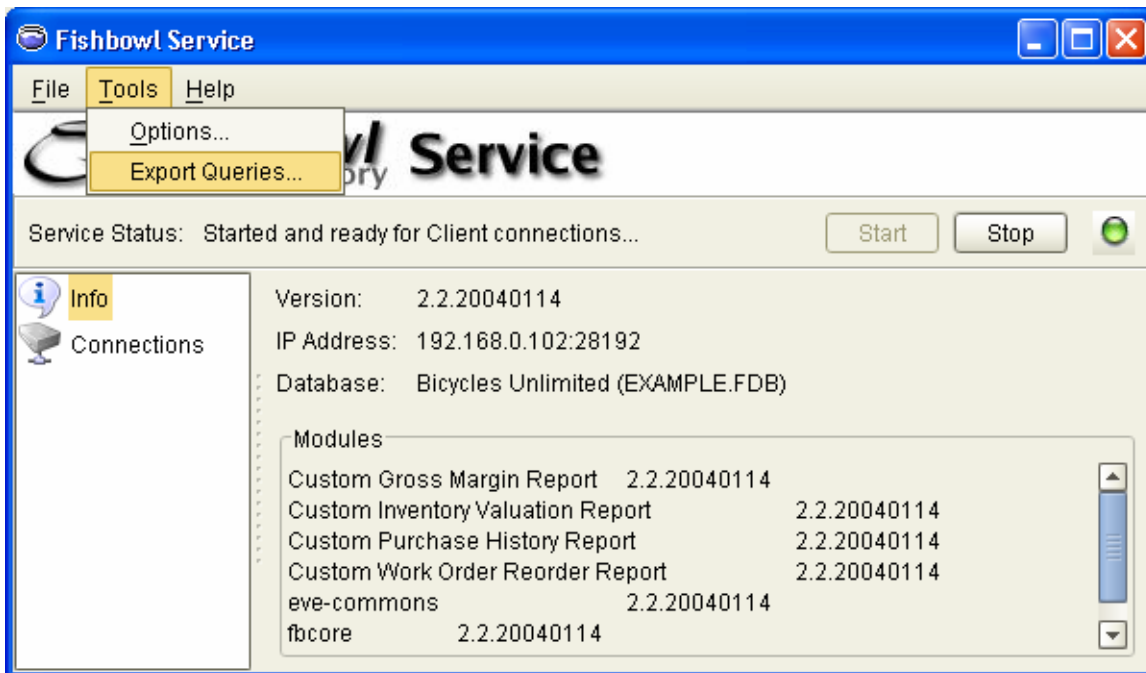



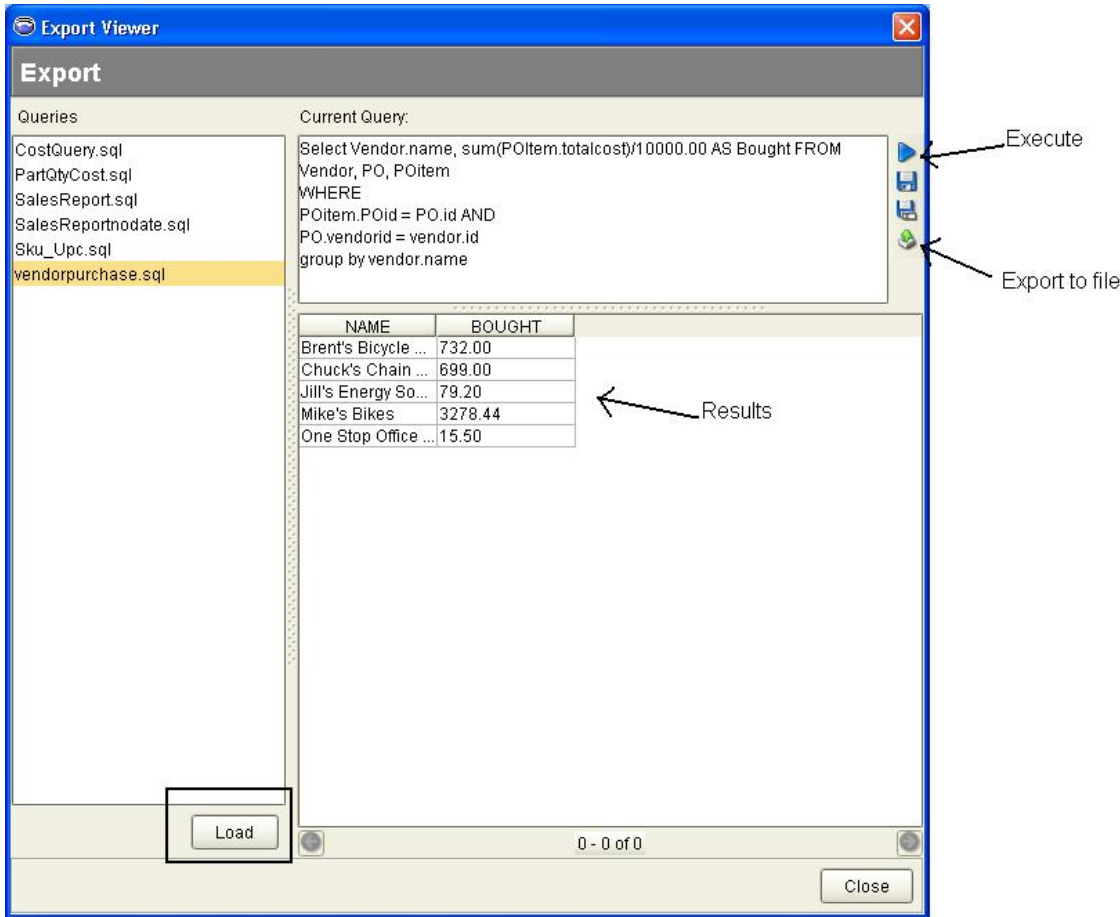


## Export Queries

From the Service: Right click the Fishbowl Icon in your computers system tray and click Show. Select Tools | Export Queries.



To see an example double click on a query from the left and click the Execute Query button .



The Green up arrow sends results to a file so that you can use other programs to open it. This file will need to be renamed if you want Excel to open it. We save it with an .sql extension, but Excel will want either .txt, .csv, .xls..... for an extension.

If you cut and paste this syntax (Select num, description from part ) into the current query window, the results will show you a list of all your parts and descriptions. The results could be saved to a file.

The current query window accepts any valid SQL command(s).